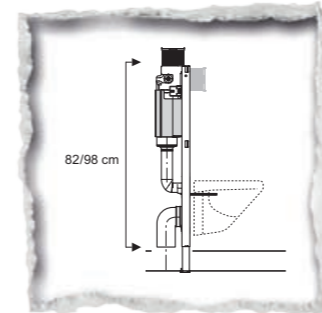


Three new designs – the Sigma10, Sigma20 and Sigma50 – join Samba, Rumba, Tango, Mambo and Bolero to offer more variety in our actuator plate range. All actuator plates are compatible with the Geberit UP320 and the UP720 concealed cisterns.



For low installations under pitched roofs or a window, the Geberit UP200 concealed cistern is suitable for shelf heights of 85 cm/100 cm. The Kappa20 and Kappa50 actuator plates are compatible with the UP200 and can be operated either from above or the front.

Leave the toolbox aside...

The safe way to install a concealed cistern and wall-hung WC



Sigma50



Sigma20



Sigma10



Bolero



Samba



Tango

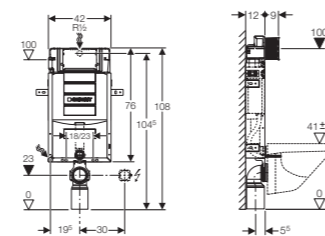


Mambo



Rumba

Kombifix installation element with UP320
110.350.00.5

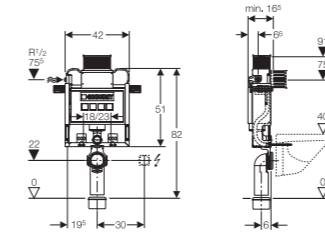


Kappa50

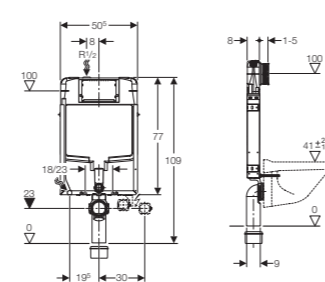


Kappa20

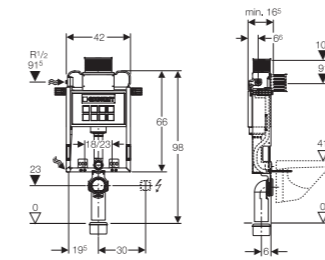
Kombifix installation element with UP200 –
85 cm, 110.250.00.1



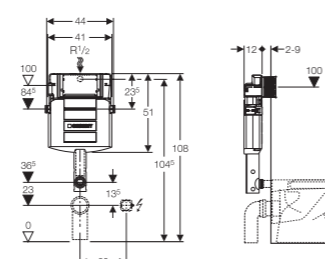
Kombifix installation element with UP720
110.772.00.1



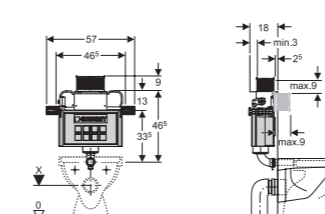
Kombifix installation element with UP200 –
100 cm, 110.255.00.1



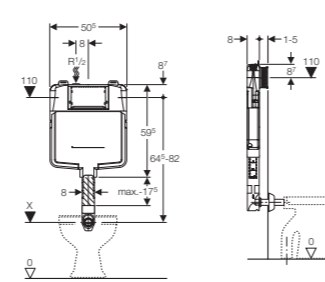
Concealed cistern UP320
109.300.00.5



Concealed cistern UP200 –
85 cm, 109.201.00.1



Concealed cistern UP720
109.771.00.1



Concealed cistern UP200 – 100 cm, 109.210.00.1



For more information please visit www.international.geberit.com



**KNOW
HOW
INSTALLED**

Geberit UP320 – the world's first concealed cistern to be installed without tools

The Geberit installation elements have proven themselves for many years. Many improvements on its functionality, quality and reliability make the installation of UP320 faster and safer.

Protection box

The protection box keeps the free space in the wall to permit access to the concealed cistern after its installation. To position the protection box, just clip it into place. Before tiling, any exceeding lengths of the box can be torn off by hand along the perforated lines – a patented Geberit technology.



Angle stop valve

With the help of a simple spindle mechanism the turn of a handwheel will open and close the angle stop valve.



Hose connection

The hose to the filling valve is easily connected to the angle stop valve with a threaded connection. Access to connect the hose is very easy, no matter if the angle stop valve is positioned in the top or the rear.



Colour coding – an easy and efficient help will take you through the installation

All adjustable pieces are coloured blue as opposed to the white colour of all other parts. A clear line that will guide you through the installation.



Adjustable flush volume

The flush volumes can easily be modified. Adjusters for the large and small volumes are marked blue.



Positioning the mounting frame

The mounting frame holds the actuator plate. It is easily attached to its exact position with the help of distance rods. When inserting the distance rods their heads need to be in a horizontal position with their long ends. The rods are fastened with a 90° turn and tensed with the blue wedges. There is no need for screws or tools.



Actuator rods

The actuator rods link the activation from the actuator plate to the flushing system inside the cistern. Again, the rods are used to set the correct position. You can attach the plate and kink the rods to remove excess ends.