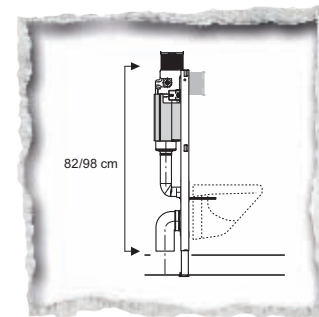


Three new designs – the Sigma10, Sigma20 and Sigma50 – join Samba, Rumba, Tango, Mambo, Twist and Bolero to offer more variety in our actuator plate range. All actuator plates are compatible with the Geberit UP300, UP700 and the UP320 concealed cisterns.



For low installations under pitched roofs or a window, the Geberit UP200 concealed cistern is suitable for shelf heights of 85 cm/100 cm. The Kappa20 and Kappa50 actuator plates are compatible with the UP200 and can be operated either from above or the front.

Leave the toolbox aside...

The safe way to install a concealed cistern and wall-hung WC



Sigma50



Sigma20



Sigma10



Bolero



Samba



Tango



Twist

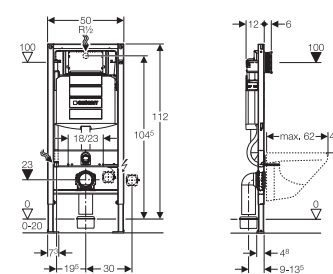


Mambo

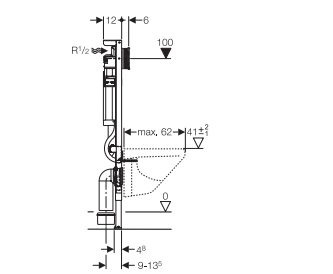
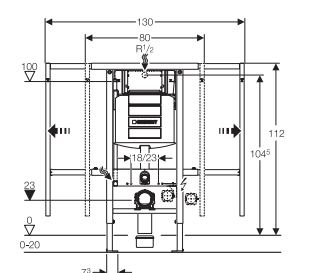


Rumba

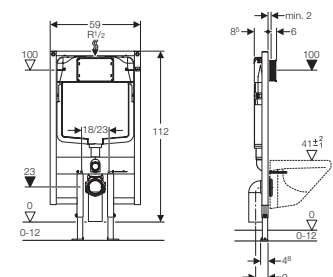
Duofix installation element with UP320
111.300.00.5



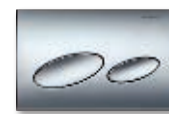
Duofix telescopic installation element with UP320
111.385.00.5



Duofix installation element with UP700
111.769.00.1

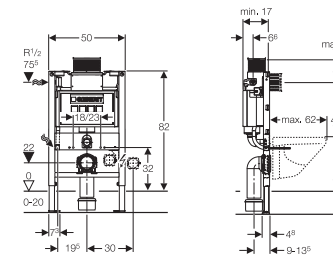


Kappa50

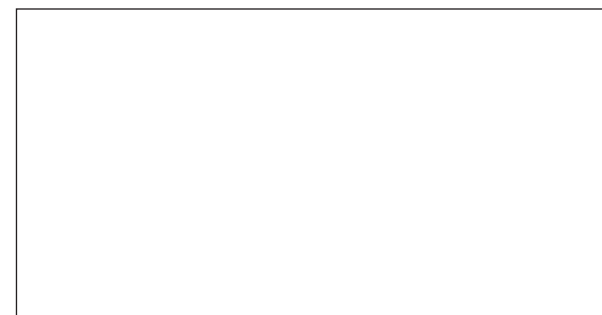
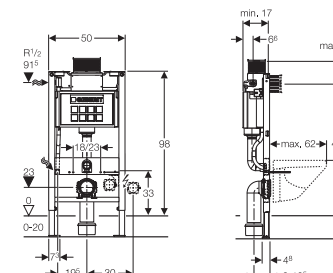


Kappa20

Duofix installation element with UP200 – 85 cm
111.240.00.1



Duofix installation element with UP200 – 100 cm
111.290.00.1



For more information please visit www.international.geberit.com



int.e 11045-07/12

**KNOW
HOW
INSTALLED**

Introducing Geberit UP320 – the world's first concealed cistern to be installed without tools

The Geberit installation elements have proven themselves for many years. Many improvements on its functionality, quality and reliability make the installation of UP320 faster and safer.

Protection box

The protection box keeps the free space in the wall to permit access to the concealed cistern after its installation. To position the protection box, just clip it into place. Before tiling, any exceeding lengths of the box can be torn off by hand along the perforated lines – a patented Geberit technology.



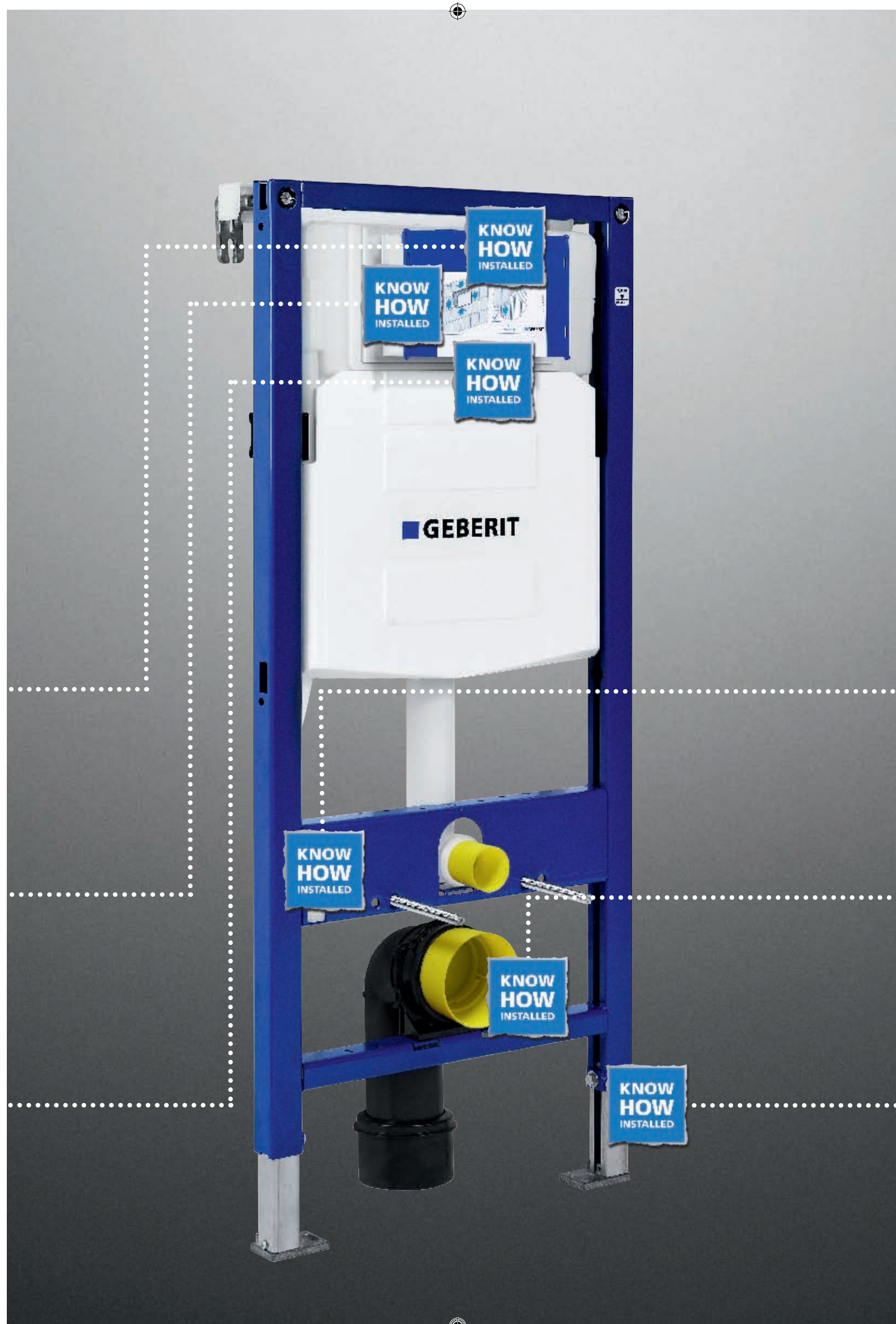
Angle stop valve

With the help of a simple spindle mechanism the turn of a handwheel will open and close the angle stop valve.



Positioning the mounting frame

The mounting frame holds the actuator plate. It is easily attached to its exact position with the help of distance rods. When inserting the distance rods their heads need to be in a horizontal position with their long ends. The rods are fastened with a 90° turn and tensed with the blue wedges. There is no need for screws or tools.



The proven designs can still be improved – introducing the new Geberit Duofix installation element

New features of our installation elements that matter when it comes to convenience of the installation.



Conduit pipe

All installation elements with UP320 and UP200 concealed cisterns are now equipped with the conduit pipe for the installation of a Balena shower toilet.



Outlet bend

The pipe bracket for the outlet bend allows you to adjust its depth continuously. With all stress relieved from the drainage pipes, the connection of the frame is much faster and easier.



Self-impeding feet

The new Duofix frames can easily be height adjusted, because the self-impeding feet hold the frame at the required height during installation, leaving both hands free for the exact adjustment.